

# Spring 2010 MATYCONN Meeting

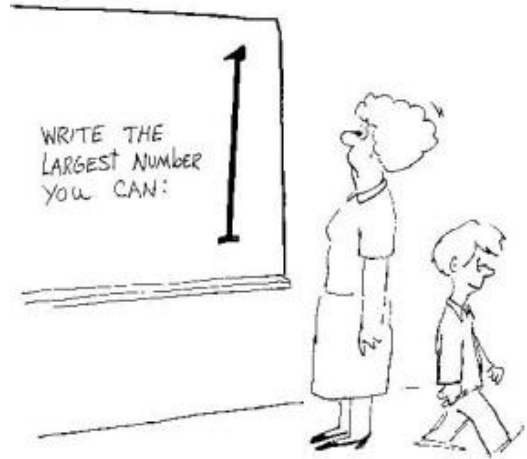
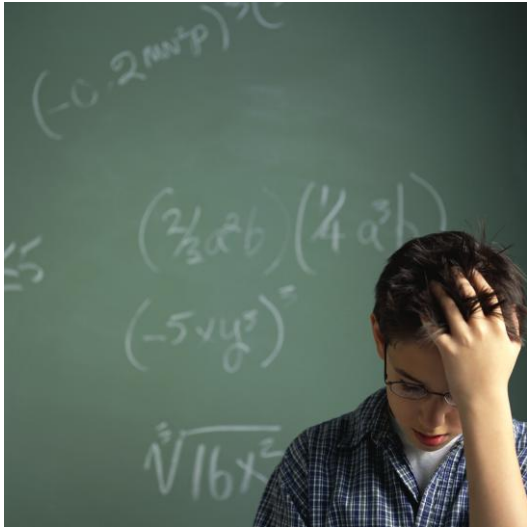
Friday, April 23rd, 2010

Three Rivers Community College - Room B125

574 New London Turnpike, Norwich, CT 06360 (parking behind building)

**3:15 to 4:15 pm "National Governors Association Math Core Curriculum and CT Algebra One Project"**

June Decker, Andre Freeman, and others



**4:30 to 5:30 pm "Activities and Resources for an Introductory Statistics Course"**

Janet Zupkus

Mathematics Professor

Naugatuck Valley Community College

## Program

12:45-1:45 pm	Registration, Social Hour, Publisher Exhibit
1:45 - 3:00 pm	Business Meeting
3:15 - 4:15 pm	NGA Math Core/Algebra One Project
4:30 - 5:30 pm	Zupkus Presentation
5:30 - 6:30 pm	Dinner

Directions to Three Rivers Community College available at

[http://www.trcc.commnet.edu/Gen\\_Info/Directions.htm](http://www.trcc.commnet.edu/Gen_Info/Directions.htm)

MATYCONN Spring 2010 Meeting

Registration Form

Friday, April 23, 2010 @ Three Rivers Community College

Please register by 4/16/2010.

Please print legibly.

Name \_\_\_\_\_

College \_\_\_\_\_

Address \_\_\_\_\_

\_\_\_\_\_

Phone: \_\_\_\_\_ Email: \_\_\_\_\_

Please Enter Amounts:

\$ \_\_\_\_\_ Meeting Registration \$20

\$ \_\_\_\_\_ MATYCONN scholarship – suggested donation \$5

\$ \_\_\_\_\_ Membership Fee – fill out separate membership application – see below\*

\$ \_\_\_\_\_ **TOTAL ENCLOSED**

Please mail this completed form (and membership form if applicable) with check payable to MATYCONN to Deborah Litwinko, Math Department, Naugatuck Valley Community College, 750 Chase Parkway, Waterbury, CT 06708 by April 16, 2010

\*Membership Information . . .

**Go to MATYCONN website at <http://www.matyconn.org> for a MATYCONN Membership Application under "About Us".**

Membership Fees are low:

- \$10 Yearly membership for full-time department members**
- \$18 Two-year membership for full-time department members**
- \$5 Yearly membership for adjuncts, students, and retirees**
- \$9 Two-year membership for adjuncts, students, and retirees**
- \$25 Lifetime membership for retirees (one-time payment)**